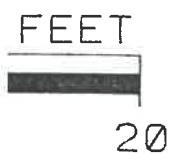


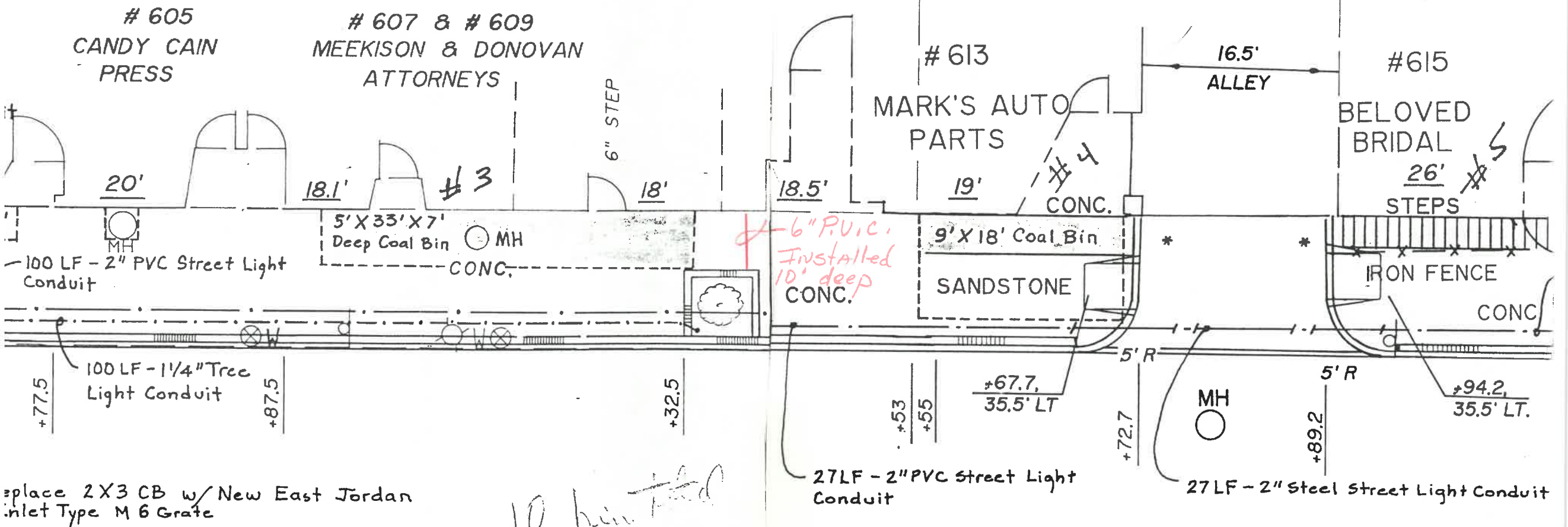
30" Coal Opening into Basement



Note
Footer tile have been disconnected

3-4-93 5 Ft 6" P.V.C. installed replacing a double tee, disconnecting footer tile and eliminated P+TRAP.

#611
NAPOLEON CHAMBER OF COMMERCE
611 N. PERRY



replace 2X3 CB w/ New East Jordan inlet Type M 6 Grate

10 bin total

41.25
29.50
11.75

E E T

11 + 00

12+00